



## International Accreditation Guidance

### Background

The Institution of Environmental Sciences (IES) and the Committee of Heads of Environmental Sciences (CHES) offers professional accreditation for Honours and Masters Programmes to international CHES member institutions.

CHES members may apply for accreditation via a 'fast track' route. The Honours programmes should fall within the remit of the UK Benchmark Statement for Earth Sciences, Environmental Sciences and Environmental Studies (ES<sup>3</sup>) and Masters programmes be clearly aligned with this. The statement is available on the CHES website, and further guidance is available.

### Benefits

By joining CHES and getting your programmes accredited, you will become part of an active community which champions environmental disciplines both academically and professionally. CHES is determined to maintain the flow of highly qualified and motivated people who can meet the challenges of the future. Students enrolled on IES/CHES accredited programmes are automatically eligible for Student Membership of the IES. This grade is free of charge and we will facilitate this with your student body.

#### For the Department

- Quality assurance: expert input into programme design and external accreditation of your degree content.
- Marketing: signals to potential students and employers that your department's teaching, learning and research is aligned with high quality professional development.
- Promotion of the programme through the IES and CHES websites and careers information.
- Free listing of news, events and publications on the CHES website and in newsletter
- Association with CHES and the IES, influential organisations leading debate, dissemination and promotion of environmental science and sustainability

#### For staff

- Networking opportunities nationally and internationally through CHES contacts, annual conference and other events
- Opportunities to engage with priority issues and influence national agendas
- Become involved in the work of partner organisations
- Monthly email update including funding opportunities, job vacancies and events
- Eligibility to sit on the Executive Committee with access to meeting reports and minutes

#### For Students

- The ability to use StMIEnvSc up to the end of the calendar year in which they graduate, signalling their professional commitment to potential employers
- First steps on an environmental career path which could take them to Chartered Status
- Exclusive access to the Members area on the IES website, with news about jobs and events
- Electronic copies of the latest edition of our journal Environmental Scientist with opportunities to publish articles and receive the monthly e-newsletter
- Opportunities for internship placements in the Institution's offices in London
- Free or reduced entry to IES events
- On graduation they automatically qualify to become Associate Members, which is offered at half price (£32.50) for the first year to graduates.

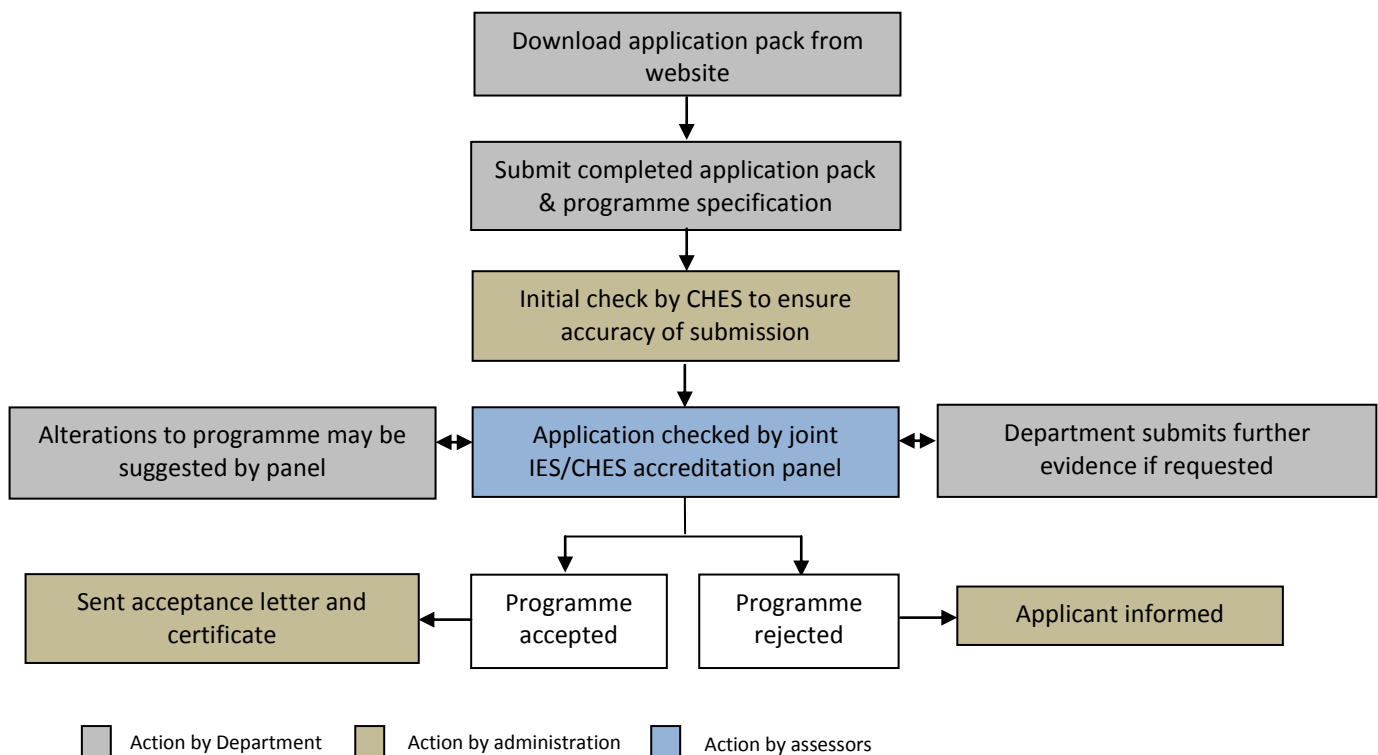
### Application Procedure

Applications must be accompanied by the relevant current Programme Specification, or its equivalent. A separate application form is required for each individual Programme. **No additional documentation is required and will not be considered if submitted.** Examples of these documents are available upon request.

The application form consists of only two elements: *Section A* seeks information on the general aims of the Programme; and *Section B* concentrates on the development of environmental professional outcomes within the Programme. The aggregate word limit for the two is a maximum of 2000 words. **Care should be taken not to duplicate the programme's Specification document in the application.** They are stand-alone documents and care should be taken to answer the specific requirements of Section A and B.

Accreditation will normally last for five years, while **any significant changes to programme specifications need to be reported to CHES/IES in a timely manner.**

*It is important to ensure that an application for CHES/IES accreditation conforms to any relevant individual institutional procedures regarding accreditation.*



### Cost

The initial cost of accrediting a single Programme is £250, with a charge of £50 for each additional Programme. The Institution should determine what constitutes a programme. In cases where referral and a visit are necessary there will be an additional charges. There will be a recurring annual charge of £150 to cover administration for the production and supply of graduate certificates.

Further guidance may be obtained from: Colin Houston at [info@ches.org.uk](mailto:info@ches.org.uk) or +44 (0)20 7730 5519.